



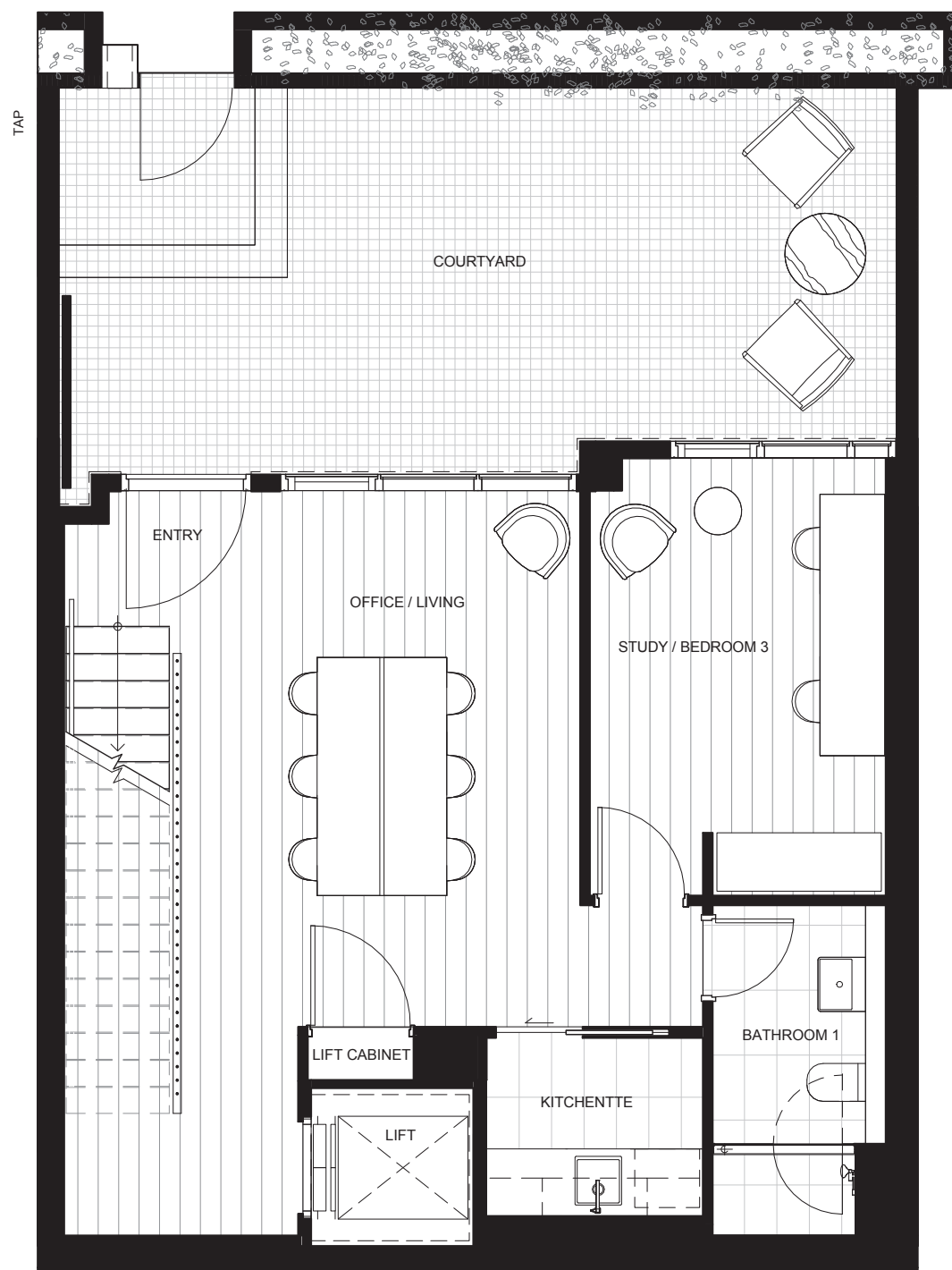
COLLINS

— WHARF —

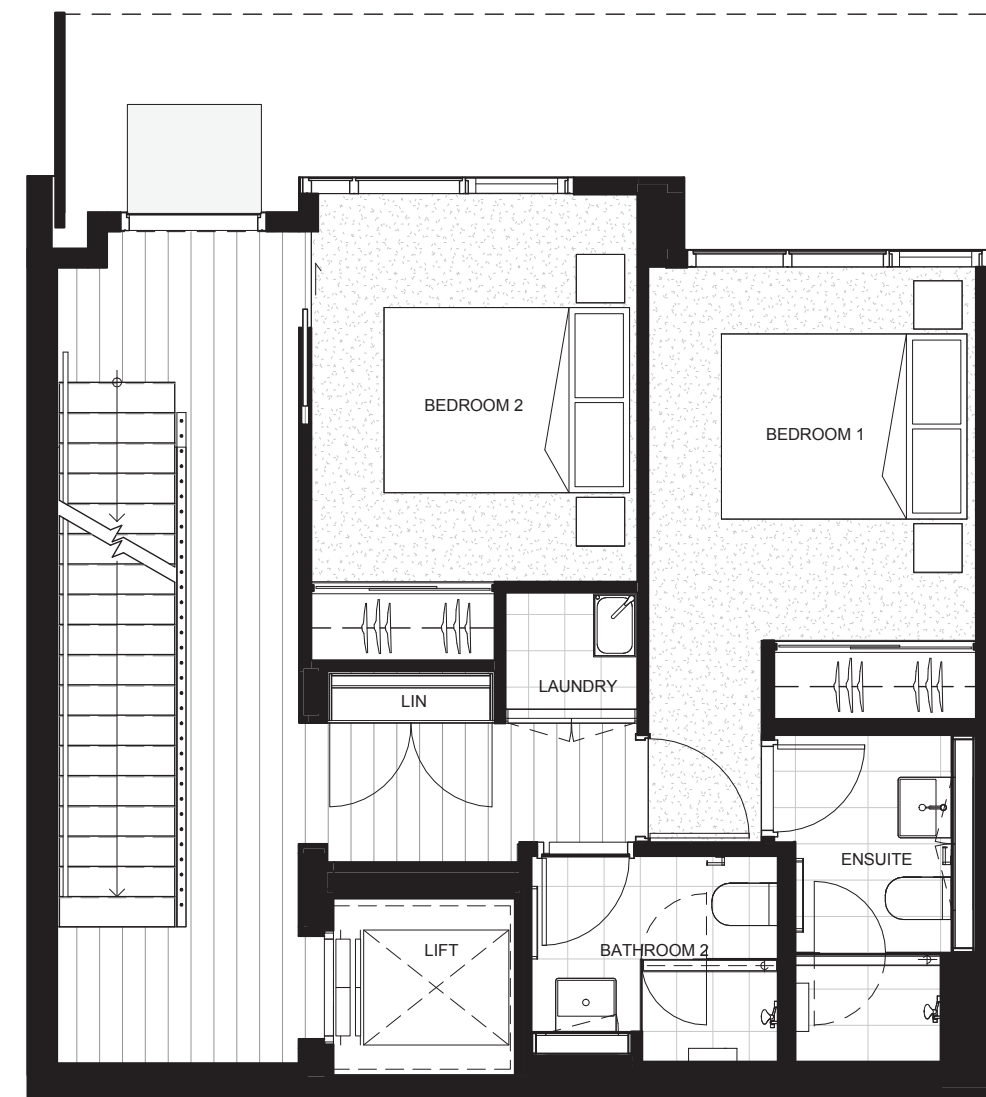
Nº1

- 3 — Bedrooms
- 3 — Bathrooms
+ powder room
+ Ground floor living
- 2 — Car parks
+ storage area

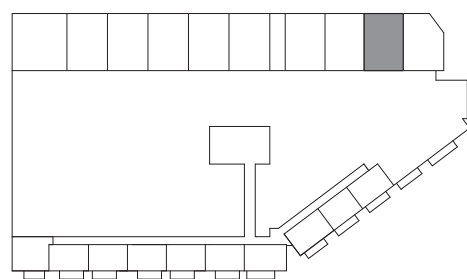
| | |
|---------------|--------------------|
| TOWNHOUSE | TH09 |
| INTERNAL AREA | ≈192m ² |
| BALCONY AREA | ≈63m ² |
| TOTAL AREA | ≈255m ² |



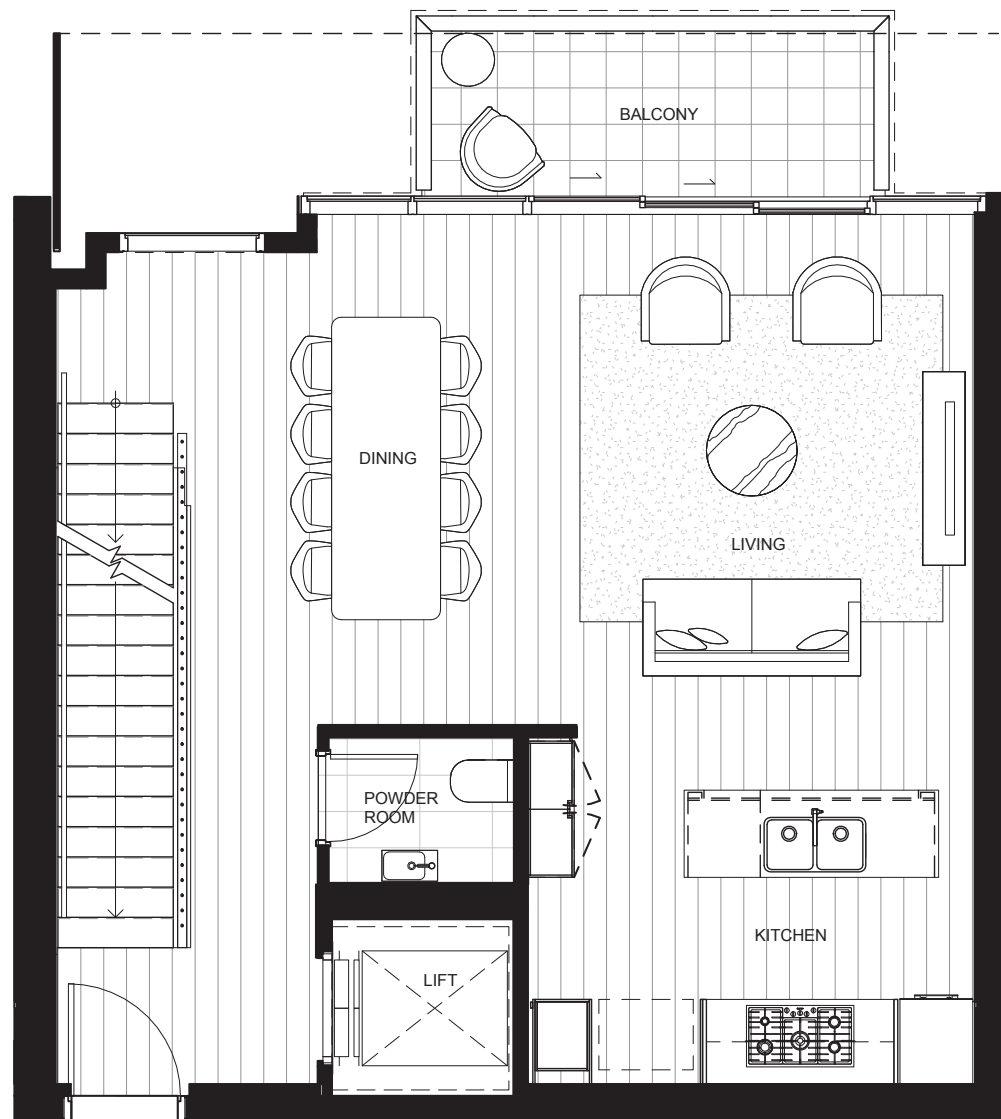
GROUND



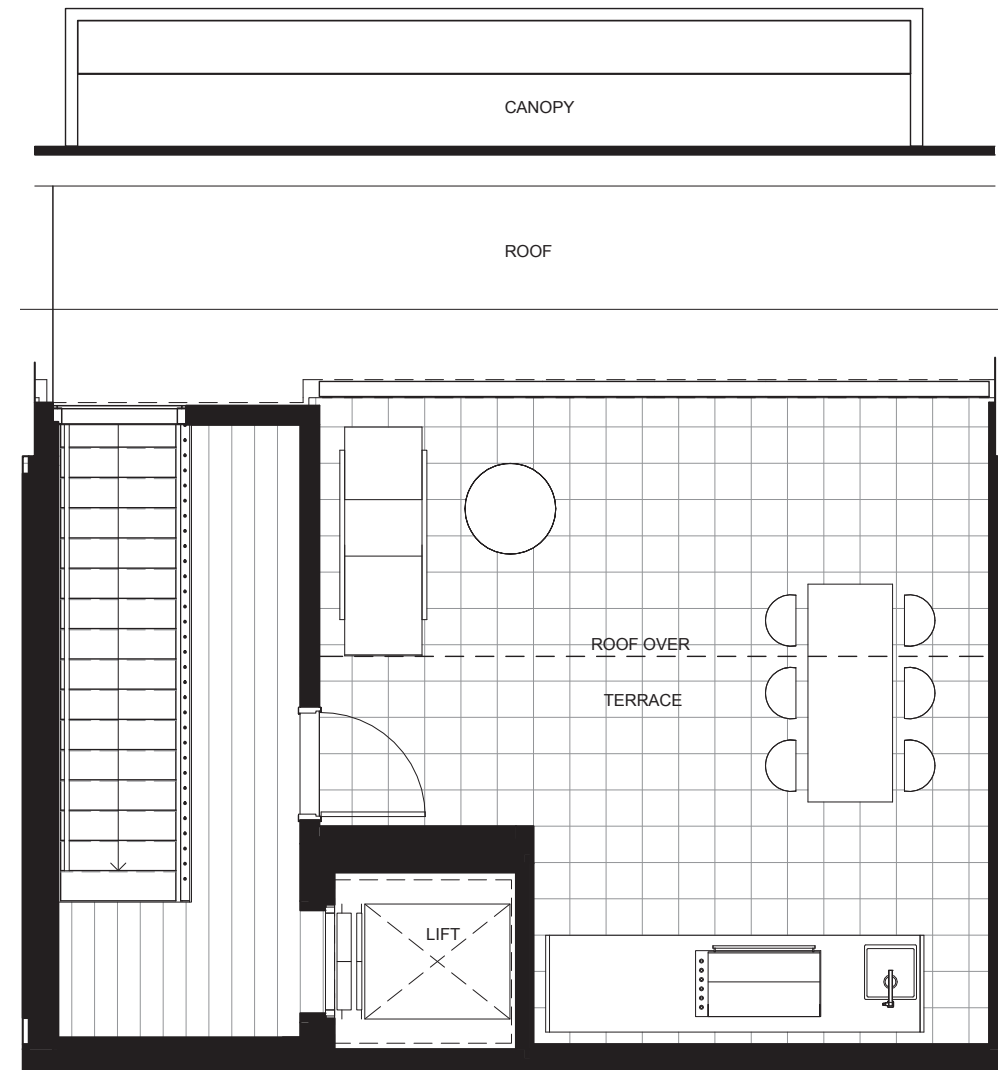
LEVEL 1



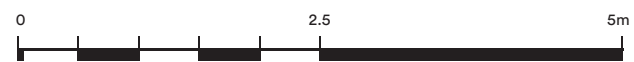
Not drawn to scale and subject to planning approval. Please note that this floor plan was produced prior to completion of construction. Measurements are calculated based on Property Council of Australia - Victorian method of measurement. Location and extent of solid façade elements, apartment dimensions, tile set-out, areas, fittings, finishes and specifications are subject to change without notice in accordance with the provisions of the Contract of Sale. The furniture depicted is not included with any sale.



LEVEL 2



LEVEL 3



Not drawn to scale and subject to planning approval. Please note that this floor plan was produced prior to completion of construction. Measurements are calculated based on Property Council of Australia - Victorian method of measurement. Location and extent of solid façade elements, apartment dimensions, tile set-out, areas, fittings, finishes and specifications are subject to change without notice in accordance with the provisions of the Contract of Sale. The furniture depicted is not included with any sale.